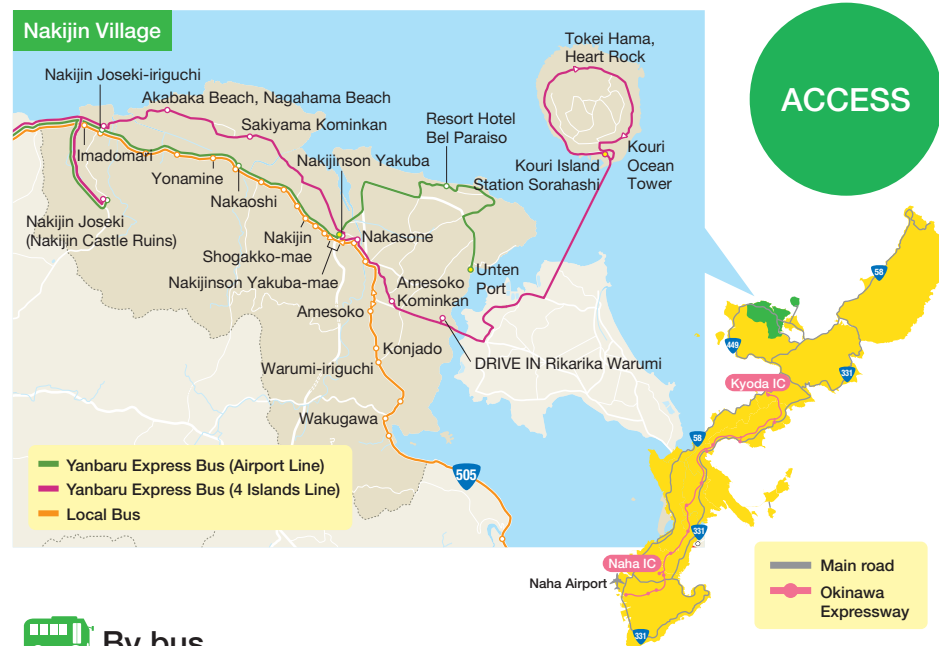


The best of both forest and sea!

Nakijin Village

GUIDE BOOK



By bus

The Yanbaru Express Bus (YKB888) is a convenient way to reach Nakijin Village directly from Naha Airport with no transfers. Alternatively, take Express Bus 117 from Naha Airport, Local Bus 20 (Nago Nishi Line) from Naha Bus Terminal, or Local Bus 120 (Nago Nishi Airport Line) from Naha Airport to Nago Bus Terminal and change to Bus 65 (Motobu Hanto Line bound for Toguchi) or Bus 66 (Motobu Hanto Line bound for Nakijin).

Scan the 2D code to go to the Yanbaru Express Bus official website!



By car or taxi

◎ Okinawa Expressway (About 90 minutes from airport)



◎ National Highway 58 (local road) (About 2 hours from airport)

◎ Taxi contact details
Hokubu Sightseeing Taxi, Mikasa Office
172 Nakasone, Nakijin Village, Kunigami-gun, Okinawa
Tel: 0980-56-2308



[Published by] Commerce, Industry and Tourism Section, Economic Affairs Division, Nakijin Village Office
219 Nakasone, Nakijin Village, Kunigami-gun, Okinawa, 905-0492
Tel: 0980-56-2256
<https://www.nakijin.jp/>



What kind of place is Nakijin Village?

Known affectionately as “Yanbaru” by locals, Nakijin is a village of rich natural surroundings, located on the northern side of the Motobu Peninsula on Northern Okinawa Main Island. With many popular tourist spots such as Kouri Island and Nakijin Castle Ruins, it is a place where you can enjoy experiences that cannot be found in the city, such as relaxing on the beach or at a pleasant café, or going for a scenic drive.

CONTENTS

5 of Nakijin Village’s Best Charms

Charm 1: Enjoyable stroll through history at a World Heritage site	02
Charm 2: A variety of cafés to relax in	06
Charm 3: Many places to enjoy a wonderful dinner	10
Charm 4: Beautiful, relaxing beaches	12
Charm 5: Hands-on art and cultural experiences	14

Many, many more charms

01: Enjoy a delicious breakfast at a restaurant!	16
02: Fun programs early in the morning and at night	17
03: Popular Okinawa soba noodle shops	18

Recommended 1-day Plans to Explore Nakijin Village	20
Find Nakijin Village’s Best Souvenirs!	22
Nakijin Village Event Calendar	24
Nakijin Village’s Hometown Tax Program	26
Nakijin Village Map	28

*Prices shown are current as of August 30. For the latest information such as closed days and opening hours, please contact the business directly.



Find the latest tourist information here!

The Nakijin Tourism Association website is packed with information on sightseeing spots in the village. It also has plenty of information about restaurants and hotels.

Scan the 2D code for the Nakijin Tourism Association!



Nakijin Tourism Association

1F Nakijin Community Center, 230-2 Nakasone, Nakijin Village, Okinawa, 905-0401
Tel: 0980-56-1057 (switchboard)
Fax: 0980-56-1255

Nakijin Village Basic Data

Population: 9,242

(As of July 31, 2024)

Land area: 39.93 km²

Village flower: Hibiscus

Village tree: Okinawa pine

Inspired by the rare Agū pig breed farmed in Nakijin Village



Nakijin Tourism Association mascot character Nacky



1. Kouri Bridge ▶ Go to P20 for details

At 1,960 meters, it is the longest bridge on Okinawa Main Island. Kouri Island, which is located across the bridge, is also known as “Love Island,” from a local legend similar to the tale of Adam and Eve. There are many cafés and other places to visit on the island.

2. Nakijin Castle Ruins ▶ Go to P2 for details

These are the ruins of the castle of the Hokuzan king, who ruled the northern region of Okinawa Main Island before the establishment of the Kingdom of Ryukyu. It was registered as a World Heritage Site in 2000. Located on a hill, it also has outstanding views.

3. Nakijin Watermelon ▶ Go to P26 for details

Well known for its delicious taste and for being the earliest watermelon to ship in Japan, Nakijin Watermelon is popular as a Christmas or end-of-year gift, both in Okinawa and beyond. Mangoes and pineapples are also grown here.

4. Hanta Road

A 700-meter long mountain path that connects Imadomari Village and Nakijin Castle Ruins. The stairways built with rocks and the cobblestone paths look much the same as when they were first built.

5. Nakijin Central Community Center

Built in 1975. The 276 red pillars surrounding the spacious grass area are very striking. It is also a popular Instagram-worthy sightseeing spot.

6. Nakijin Agū ▶ Go to P11 for details

Nakijin Agū is an extremely rare breed of black pig that inspired Nakijin’s mascot character, Nacky. Savor the delicious taste of Agū pork at local restaurants.

7. Heart Rock

These large, heart-shaped rocks became a hot topic when they appeared in a TV commercial. Located at Tinu Beach on the north side of Kouri Island, with the Nakijin Tourism Association Parlor located nearby, this is the most popular tourist spot on the island.

8. Fukugi Tree-lined Streets of Imadomari ▶ Go to P20 for details

Imadomari is a charmingly atmospheric hamlet whose streets are lined with fukugi trees (happiness trees) that were originally planted as windbreaks. Located near the beach, this is a recommended spot for exploring by rented bicycle.

5 of Nakijin Village's Best Charms

Read about five of the best charms of Nakijin Village, which boasts many places to experience, such as soothing scenery and delicious food that will lift your spirits.

Nakijin Castle Ruins at the top a lushly green hill,

with panoramic views of the ocean



Charm 1

Enjoyable stroll through history at a World Heritage site

Make sightseeing even more fun by learning about the history of Nakijin Village, which once flourished as the center of Okinawa Main Island's northern region.

Stronghold of the Hokuzan king, long-ago ruler of the north of Okinawa Main Island

Nakijin Castle Ruins, one of Nakijin Village's most well-known historical sites, is located on a hill about 100 meters above sea level. In 2000, this famous castle was registered in the World Heritage list as part of the "Gusuku sites and related properties of the Kingdom of Ryukyu." There is still much about this castle that remains shrouded in mystery, including how old it is and who built it.

Before the Kingdom of Ryukyu was established in 1429, three forces ruled the main island of Okinawa: centrally located Chuzan, Nanzan to the south, and Hokuzan to the north. Nakijin Castle was the stronghold of the king of Hokuzan, who ruled the northern region of Okinawa Main Island.

Nakijin Castle served as the residence of three generations of kings. In 1416, the allied forces of the Chuzan king, Sho Hashi, who went on to unify the island and establish the Kingdom of Ryukyu, took control of the castle, which led to the downfall of the Hokuzan kingdom. Later, Nakijin Castle became a residence for officers dispatched from Chuzan.

After the establishment of the Kingdom of Ryukyu, Shurijo Castle became the island's political center, but Nakijin Castle is also believed to have played an important role as a base to unite the northern region. In 1609, however, the castle, along with Shurijo Castle, came under attack from military aggression by the Satsuma Domain, and eventually fell into ruin.

Although the site had lost its role as a castle (gusuku), it became a spiritual anchor for the local people, and it is said that many people visited the sacred site in the castle to pray.



Shurijo Castle before World War II (Okinawa Prefectural Archives collection)

Registered as a World Heritage Site, Nakijin Castle is also famous for its cherry blossoms

After the devastation of the Battle of Okinawa, Nakijin Castle was designated as a Tangible Cultural Property in 1962, before Okinawa's reversion to Japan, and the work to preserve and repair the castle began. In 1972, the year of the reversion, Nakijin Castle Ruins was designated a national historic site and is now a popular tourist attraction.

The hilltop castle, built in the renkaku style, consisted of 10 wards known as *kuruwa*, which were divided by stone walls. Its layout made skillful use of the topography, and the 1.5-kilometer-long castle wall describes beautiful, undulating curves along the hillside. The construction of this wall is believed to predate similar castle walls built elsewhere in

Japan by about 200 years. Unlike the white stone (Ryukyu limestone) found in most of Okinawa's *gusuku*, Nakijin Castle is distinctive for its use of ancient limestone that is hard and less prone to cracking. In 2006, this castle was selected as one of Japan's top 100 castles by the Japan Castle Foundation.

Nakijin Gusuku Cherry Blossom Festival, which is held from late January to February every year, attracts large crowds from all over Okinawa and the rest of Japan. The illumination of the blossoms against the backdrop of the castle ruins create a magical atmosphere at night.

Nakijin Castle Ruins remain a much-loved place, not only as a historical site, but as an important base for local culture and tourism.

Our guide



Yasushi Tamashiro
Director of Nakijin Village History and Culture Center

Born in Nakijin Village in 1977. Majored in archaeology at Okinawa International University. Engaged in research of Nakijin Castle Ruins since 2003. Serving as Director of Nakijin Village History and Culture Center since 2019.

First the World
Heritage Site

Take a walk around the Nakijin Castle Ruins!

Cast your minds to history as you actually wander through the Nakijin Castle Ruins, which retains the atmosphere of long-gone days.



Map

Data

A 5101 Imadomari, Nakijin Village
T 0980-56-4400
Y 600 yen
H Hours 8:00-17:30 (last admission)
(May-August: Last admission is 18:30)
C Open every day
<https://www.nakijinjoseki-osi.jp/>



3 Umya



A wide open space used for important events and ceremonies. It is believed that the Seiden (main hall), Hokuden (north hall) and Nanden (south hall) were situated on three sides of Umya.

There is a worship site called Karauka on the southeast side of Umya!

I'm taking it easy



4 Uchibaru



Thought to have been the residential quarters of the court ladies who served the castle, this area featured Tenchiji-Amachiji Utaki, the most sacred site in the castle that men were forbidden to enter. On a clear day, you can see Yoron Island from here.

I can feel the power!



1 Gaikaku (Outer Ward)

Confirmed to be part of the castle and added to the national historical site designation in 1975. Relatively low stone walls at around 2 meters high undulate for several hundred meters.

This is the castle entrance, right?



2 Heiromon (Heiro Gate)



The main gate of Nakijin Castle Ruins that was repaired in 1962. The gate has a solid structure with crenels on both sides, and a single large solid rock is used for the ceiling.

I've reached the finish line!

7 Shigemajo Ward



This ward is located one tier down from the Shukaku on the south side of the ruins. Located at the back of the Nakijin Castle and consisting of four buildings, it is believed to have been the living quarters of high-ranking soldiers who served the lord of the castle.

The walls have hardly changed from their original state

5 Ushimi Ward

What spectacular views!



An impregnable enclosure surrounded by the highest stone walls. As many horse bones have been excavated from this area, which has a tunnel that passes through to the castle's exterior, it is believed that this area was used by the military for training horses. Today, orange and cherry trees are grown here.

Time for a rest.



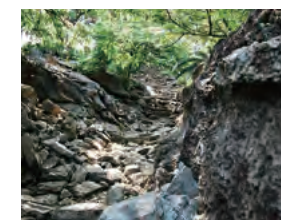
6 Shukaku (Main Ward)



The Shukaku, or Main Ward, is located to the east of and one tier higher than the Umya. It is believed to have contained the most important building in the castle, where ceremonial services were held. There is a small shrine to the god of fire and stone lanterns here.

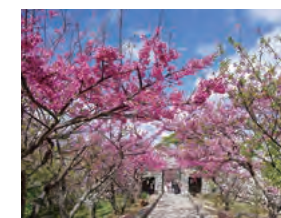


CHECK!



The old road is still here!

Entering from the Heiromon gate, on the right, you will see a winding, old, cobblestone road. This road is distinctive for its narrow width, which gave the castle's defenders an advantage when enemy soldiers invaded the castle.



Also famous for cherry blossoms!

From mid-January to early February every year, Taiwan Cherry trees are in full bloom, and the castle ruins become the location of the Nakijin Gusuku Cherry Blossom Festival.



CHECK!

If you want to know more, you can walk with a guide

Nakijin Castle Ruins has guides available at all times while the site is open. Free guides are available, but there may be a wait, so we recommend paying for a reserved guide (600 yen per person for up to five people).



Reserved guides

Nakijin Gusuku Workshop

T 0980-56-4406
H 8:30-16:00
C Open every day

Guided walks around the castle take about 60 minutes.



Come here to learn more



Nakijin Village History and Culture Center

A 5110 Imadomari, Nakijin Village T 0980-56-5767
H 9:00-17:00 C Open every day

*Common ticket with Nakijin Castle Ruins.



Map



A variety of cafés to relax in

As well as enjoying delicious meals and sweets, spaces where you can feel nature, such as the sea and the mountains, hold great appeal!



Relax with the sound of the waves as your background music

On the Beach CAFE

Located right next to Sibantina Beach. The hamburger, made with an Okinawa pork patty and plenty of vegetables straight from the farm, and the hand-kneaded hamburger steak are popular.

1. Ryukyu hamburger with hamburger steak, fried egg, etc. in an original bun. (¥1,200)
2. On fine days, we recommend the windowless second-floor area.
3. Enjoy a delicious meal while admiring the view.
4. There is even a Shisa pottery experience on the 1st floor.
5. The natural beach stretches out before your eyes.



Tropical drink that recreates the sea



A 612-2 Imadomari, Nakijin Village
 ☎ 0980-56-4560
 H 10:00-18:00 (last orders: 17:00)
 C Open every day
 @on_the_beach_cafe.okinawa

Map



A 298-1 Kouri, Nakijin Village
 ☎ 0980-56-2680
 H 11:00-16:00 (last orders: 15:30)
 C Wed
 https://moringanoki.com/

Map



Proud of its healthy and delicious food

Moringa no Ki Café & Shop

Opened with the owner's hope that customers will enjoy eating delicious food with peace of mind, this café serves additive-free food made as much as possible with local ingredients that are cultivated naturally and without chemical pesticides or fertilizers. Recommended items include smoothies and lattes made with highly nutritional moringa.

Gluten-free rice flour chiffon cake



4

1. Onigiri plate, featuring a rice ball made with organic Koshihikari rice grown in Uonuma, and moringa smoothie. Naturally cultivated moringa powder is also available to purchase in the shop.
2. The wide open 2nd-floor area looks out over Kouri Bridge and the sea.
3. Products made with moringa are sold on the 1st floor.
4. Rice flour and moringa chiffon cake

You'll love the comfy, homelike atmosphere Cafe North Mountain

The café next door to the Hokuzan Store is a place where locals relax. The menu's main items are vegetable-laden taco rice and tacos, and there is also an extensive dessert and drinks menu. Open from 10:00 a.m., it is a popular spot for a latish breakfast.



1

Choose between cinnamon and plain varieties

1. Apple pie that has many repeat customers (¥190 each). It has a simple, rustic flavor, and it is popular as a gift when visiting someone's home. The drink at the back is a juice made with syrup made from Nakijin watermelon (¥480).
2. Vegetable-laden taco rice (¥750)
3. Pleasant space adorned with greenery



2



A 170 Imadomari, Nakijin Village
 ☎ 070-8443-9980
 H 10:00-15:00
 C Weekends and public holidays
 @cafe_north_mountain_nakijin

Map

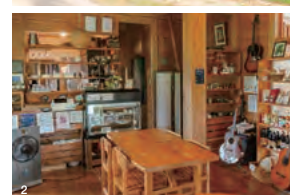


Hilltop café surrounded by lush greenery

Yanbaru Hot Café

Serving foods with mild, healthy flavors, made with vegetables and herbs grown in the owners' own garden. The lunch plate, featuring seven or so different dishes, is very popular, and many customers visit specifically for owner Kyoko's home-made jam and miso.

1. Hilltop location with excellent views
2. Inside the café with its many musical instruments. It hosts a variety of events, including live music performances.
3. Lunch Plate (¥1,500)
4. The café also sells home-made miso.
5. Owners, Mr. and Mrs. Fujiwara, have a warmly welcoming aura.



A 848-4 Kamiuntan, Nakijin Village
 ☎ 0980-56-3595
 H 11:30-16:00 (last orders: 16:00)
 C Mon, Tue
 https://yanbaru-hotcafe.com/

Map



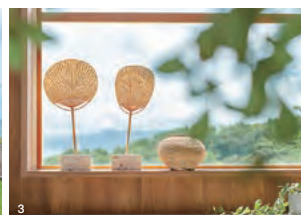
Map

A Inside KAYATSUMA OKINAWA 506-1 Unten, Nakijin Village
T 0980-56-1516
H 11:00-16:00
C Tue, Wed *Open if a public holiday
@ @sunny_kitchen_pancake_okinawa

Fluffy pancakes are popular SUNNY KITCHEN OKINAWA

SUNNY KITCHEN OKINAWA opened in 2023 inside the KAYATSUMA OKINAWA private villa complex. The fluffy pancakes, made with special ingredients, including Gunma Prefecture-grown wheat flour and strongly flavored butter, have a gentle flavor. The perfect spot for lunch or afternoon tea.

1. Seasonal fresh fruit pancakes (¥1,463 for 2 pancakes) 2. A quiet location by the sea 3. The stylish interiors are decorated with pottery and art made by Okinawa-based creators



Enjoy mountain views,
a rarity for Nakijin



1. Original garlic shrimp with rice (¥1,300)
 2. Admire the views while you enjoy your meal from the outdoor seating on the roof. Benny's, which serves acai bowls, is just nearby. 3. Shekwasha lemon squash (¥650)

Enjoy a famous Hawaiian dish here on Kouri Island

KOURI SHRIMP

The garlic shrimp, made with an original sauce, features large, plump shrimp and a richly delicious flavor that is highly addictive. Original merchandise is also available on the 1st floor.



Highly popular with pizza lovers!

Hibis Resort Hibis Café

A restaurant & café located on the 2nd floor of Hibis Resort, an exclusive 4-room pension. Its menu of authentic Naples-style pizza and pasta made with local produce attracts many repeat customers.

1. Star margarita (¥2,000). Crispy outside with a soft, chewy center 2. Outdoor seating with beautiful views 3. Enjoy the dynamic scenery of Otowadake and Oi River.



Map

A 234-4 Amesoko, Nakijin Village
T 0980-56-3979
H 12:00-15:00 (last orders: 14:30)
C Wed, Thu **@** @hibis2020

An extensive menu CAFE FUKURUBI

Café & restaurant near Heart Rock. The extensive menu includes a carpaccio pizza featuring Okinawan shimadako octopus and shrimp (¥1,930) and hamburger steak made with Yanbaru Island Agū pork (¥1,550). At night, you can also enjoy a barbecue or shabu-shabu (bookings essential).



1. Proud of its food made with local produce 2. Hilltop location with wonderful views 3. Ririkoi butter pizza, with the appealingly tart flavor of Okinawan passionfruit (¥1,180) 4. Dragon fruit frozen dessert that is just as exciting to look at as it is to eat (¥780)



Map

A 2516 Kouri, Nakijin Village
T 090-1436-9659
H 12:00-18:00 *Sunset hours from 18:00 in summer
C Occasionally **@** @cafe.fukurubi

Baked goods café in an atmospheric traditional house

Cafe.Kanasa

A traditional Okinawan house that almost 60 years old has been renovated into a pretty café. Enjoy tarts baked with seasonal fruits, as well as Tofa, a tofu pudding made with local soymilk. The café's online shop sells baked goods that make the perfect gift.



1. There are always around 8 varieties of tart available. 2. The store has a striking red door under a tiled roof. 3. You can also enjoy lunch in the café, which is exciting even just to sit in. 4. Tofa, a traditional Taiwanese dessert made with soymilk (¥700) 5. House-made ginger ale (¥530)



Map

A 345 Nakasone, Nakijin Village
T 0980-43-6766
H 11:00-17:00
C Sun **@** @cafe.kanasa

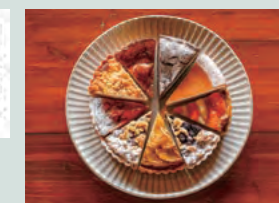


Cafe.Kanasa's seasonal tart (1 whole) Donation of ¥17,000

Equivalent of 1 whole (2 each of 4 varieties) baked tart made with seasonal fruit and vegetables will be delivered. Enjoy the delicious flavors of ingredients from each season. Assortments of baked goods are also available as gifts.



Scan here for benefit gifts





Many places to enjoy a wonderful dinner

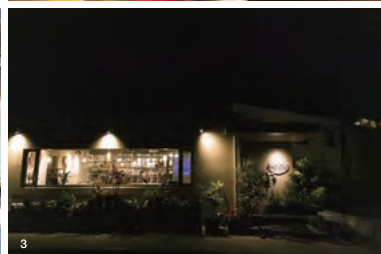
Nakijin is blessed with appealing seasonal produce. Come and encounter such happiness-inducing food.

photo&text: Naoki Yasumura

Enjoy gentle food loving prepared by the chef

Nakijin Restaurant sango table

A casual restaurant serving meals made with seasonal island vegetables and meat and fish procured from within Okinawa. The juicy hamburger steak, made with an original recipe combining Agū pork and beef, is very popular.



1. Sango table hamburger steak, accompanied by generous servings of colorful vegetables (¥1,320)
2. The chic, spacious interiors are also used for weddings and parties.
3. The exterior is also stylish.



Map

A 371-4 Nakasone, Nakijin Village
☎ 090-1946-8524
H Lunch: 12:00-14:00 (last orders when sold out)
Café: 14:00-15:00 (last orders)
Dinner: 17:30-22:00
(Last entry: 20:30 / Last food orders: 20:45)
☑ Mon (and several other days occasionally)
<https://www.sangotable.okinawa>

Enjoy rare meats at reasonable prices

Horumon Yakiniku Izakaya Usi no ibukuro

A special yakiniku izakaya where you can enjoy food made with Okinawa-produced wagyu beef, mainly from delivered cows raised in Nakijin, which is lean and richly flavored, as well as generous quantities of Yanbaru produce. The drinks menu is also extensive, making this a recommended spot for people who enjoy alcoholic beverages.

It also has an impressive variety of horumon (offal) that has been meticulously prepared.



1. 4-meat platter (¥2,420) and premium tongue and green onion salad set (¥1,595)
2. There are also semi-private rooms at the rear of the restaurant.
3. Located in a tucked-away spot up a narrow street
4. Wagyu beef tendon stew (¥660)



Map

A 155 Nakasone, Nakijin Village
☎ 0980-43-0739
H 17:00-21:30 (last orders: 21:00)
☑ Sun, other days occasionally
<https://www.usinoibukuro.jp>

Enjoy delicious flavors to your heart's content

Nagado-ya

Nakijin Agū specialty restaurant opened to convey the appeal of the rare black pork. From its very beginnings, Nagado-ya has insisted on additive-free, Okinawa-grown produce. You will definitely want to try the shabu-shabu set, which also features Yanbaru-grown vegetables.



1. Nagado-ya Shabu-Shabu Course, featuring Nakijin Agū and Higashison Paiton pork (¥4,400)
2. The spacious interior features private rooms, tables, and a counter area.
3. It is a popular restaurant, so be sure to book before you come.



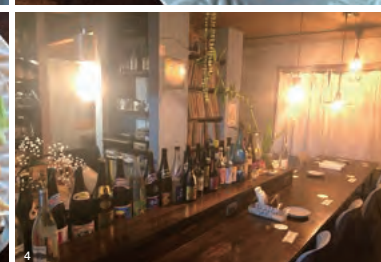
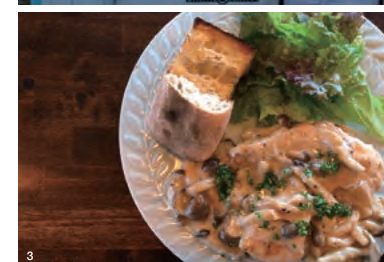
Map

A 710-1 Tamashiro, Nakijin Village
☎ 0980-56-4782
H 17:00-22:00
☑ Open every day
https://nakijin.net/index_jp.html

Your background music is jazz, island songs, and the sounds of the waves

Otonano Kominka Nomidokoro Imadomare

This small, sophisticated bar, which has only eight seats at the counter, stands alone near the beach, in a hamlet of fukugi tree-lined streets and traditional *kominka* houses. Enjoy food made mostly with Okinawan produce that pairs perfectly with natural wines and *awamori*, Okinawa's local liqueur, in a space where adults can spend their precious time relaxing.

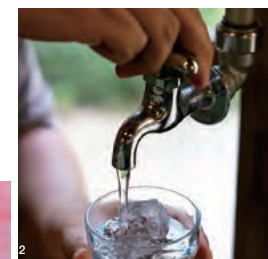


1. A 60-year-old *kominka* that stands alone, without banner or sign
2. Herb-crusted grilled marlin & baguette (¥2,000)
3. Yanbaru chicken in cream sauce & baguette (¥1,800)
4. A stylish space with shelves full of LPs and awamori bottles lining the counter



Map

A 3007 Imadomari, Nakijin Village
☎ 080-9689-4796
H 18:00-22:00
☑ Mon, Tue @ @imadomare505
<http://imadomare.jp>



Experience nostalgia and novelty

Showa izakaya Hokuzan Shokudo

A retro izakaya bar in an Okinawan *kominka* with a Showa image. The main appeal of this popular establishment is its menu of dishes made with local Nakijin produce and delicious ingredients from all over Okinawa. The menu is mainly Okinawan cuisine, but also includes other Japanese, Western, and Chinese dishes.



Map

A 3570 Imadomari, Nakijin Village
☎ 0980-56-1555
H 18:00-23:00
☑ Wed @ @izakaya_hokuzan



1. Goya Chanpuru and Ninjin Shirishiri Chanpuru (both ¥700)
2. Bottomless awamori poured from a tap (¥1,100 for 1 hour)
3. Both exterior and interior feature nostalgic items from the Showa period



Plenty of facilities make it a great place to come with children

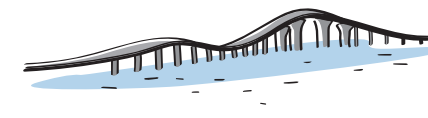
Sonmin-no-hama Beach

Sonmin-no-hama Beach is located at the rear of Nakijin Village General Sports Park and is always bustling with locals. The wide, shallow beach is recommended for people who want to enjoy swimming and snorkeling in the sea.



A 851-1 Nakasone, Nakijin Village
☎ 0980-56-5955 (Sports Park Office)
*Parking available (free)
*Toilets and showers available

Map



With a walking trail and a gazebo on the grounds, you can enjoy your time on the beach any way you like, whether that be an exploratory wander along the shore or simply lazing on the sand. Next to the gazebo, there is the Nakijin Village General Sports Park Camping Area (P21), where you can stay overnight.

Camping area is also available!



So many Instagram-worthy spots

Uppama

“Uppama” means “large beach” in the Okinawan dialect. True to its name, this white sandy beach stretches for over 1 kilometer. Nearby Resort Hotel Bel Paraiso has a large variety of marine activities available.



Charm 4

Beautiful, relaxing beaches

Enjoy the feel of the smooth and dry white sand and be soothed just by gazing out at the clear, blue sea



Stretching out from the gateway to Kouri Island

Kouri Beach

A beach located at the foot of Kouri Bridge. The vast open area to the west, with its 300-meter stretch of sandy beach, has a swimming zone, while the large tree-shaded area is recommended for people who want to spend a long, relaxing time at the beach. There are also plenty of shops and places to eat and drink nearby.



A Kouri, Nakijin Village
*Parking available (free)
*Toilets and showers available at Kouri Island Station Sorahashi

Map



Anti-jellyfish nets are placed offshore in summer, so you can enjoy swimming in the clear sea water with peace of mind. Marine sport experiences such as banana boats are also available.

Kouri Island Station Sorahashi is also nearby



During swimming season from April to September, a net is set up to prevent the habu-kurage, a species of box jellyfish native to Okinawa, from infiltrating the swimming beach, so you can swim with peace of mind. You can use the swimming zone free of charge even if you are not a staying guest.



Map

A Unten, Nakijin Village
*Parking available (Resort Hotel Bel Paraiso parking; ¥500 per car)
*Toilets and showers available (Fee of ¥300 per person)



SUP & Snorkel Tour Donation of ¥60,000

2.5 hours to enjoy the Nakijin blue sea. Cruise the waters on SUP or sea kayak as you enjoy snorkeling.



GoodGoodSun

A 555 Yonamine, Nakijin Village
☎ 090-2734-1898
@goodgoodsun_okinawa



Scan here for benefit gifts



Hands-on art and cultural experiences

Enjoy dyeing textiles or learn how to play the sanshin. Spend a rich time encountering the culture of Okinawa.

01 Dyeing

An original dyed item that is the only one of its kind in the world

Experience botanical dyeing using dyes extracted from Okinawan plants, clay dyeing using the red clay of Nakijin, or authentic indigo dyeing with Indian indigo. The dyeing process differs depending on the item you want to dye, such as shawls or eco-bags, so check the website for details.

BOTANICA

A 3933 Imadomari, Nakijin Village
T 0980-56-5541
H 9:00-17:00
(Experiences reception: 10:00-14:00)
C Sun **Y** From ¥2,000 per person
<https://botanica.co.jp/>



Map



1. The natural appearance created with botanicals, red clay, and Indian indigo, has a wonderful charm. 2. Even children will enjoy this experience. 3. You will love your original item when it's finished.

02 Sanshin & Finger Whistle Experience

Have fun learning how to play the sanshin and finger whistle from friendly teachers!

Sanshin lessons taught by Mr. Yonamine, who has a detailed knowledge of classical Ryukyu music. For the first 30 minutes of the 1-hour lesson, you will learn how to read the sanshin music sheet and what the songs mean. The second half of the lesson is a lecture on how to play the finger whistle that is a must for Okinawan cheering and festivals.

Naoki Yonamine Sanshin School

A 299 Yonamine, Nakijin Village
T 090-5088-5374
H 9:00-17:00
C Occasionally **Y** From ¥2,000 per person
F Naoki Yonamine Sanshin School

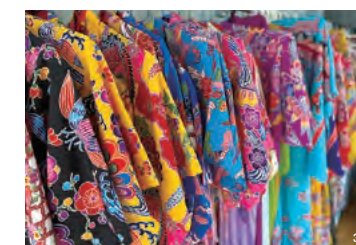


Map



Dress up in Ryuso and take photos at lovely Nakijin locations as a moment of your stay

Enjoy a photo shoot dressed in Ryuso, traditional Okinawan costume. Choose from two locations: in front of Nakijin's beautiful beach or at the World Heritage site, Nakijin Castle Ruins. You can take your own photos or opt to have a staff member take them for you.



1. There is also a wedding photography plan that includes dressing and makeup. 2. Group shoots are absolutely OK! 3. Ryuso in many different colors. You'll find it hard to choose.

04 Shell Ginger Harvest and Distilling Experience

Be soothed by the Okinawan herb, shell ginger

Enjoy the whole experience from harvesting the shell ginger, which is grown without chemical pesticides or fertilizers, to distillation. You can also take home 5 ml of essential oil, which you can use as an aromatherapy oil to enjoy its fragrance or as a massage oil when blended with a carrier oil.

1. Tour the distillation facility. 2. Savor the aroma of the distilled water. Refreshing and heart-soothing. 3. YUMEJIN grows shell ginger leaves on an organic farm with Organic JAS certification. Experience the process from the harvesting stage.

YUMEJIN Ltd.

A 18-2 Kaneshi, Nakijin Village
T 080-5858-2659
H 10:00-17:00 weekdays
C Weekends, year-end/New Year period
Y ¥10,000 per person (bookings required)
<https://www.yumejin.jp/>



Map



So many

01

Places with delicious breakfasts!

Rise early on a fresh, sunny day and call in for a delicious breakfast while on your morning stroll.

photo&text: Naoki Yasumura

There's even honey to spread on your toast!



1. The morning set is priced at ¥500. French toast is also available.
2. A caffè latte is the perfect accompaniment to hand-made donuts.
3. On fine days, it's pleasant to enjoy your meal outside at this seaside café.



A hot moment with a cup of coffee.

This café's specialty is its delicious coffee made with Mamemaru coffee beans from Kitanakagusuku Village. Order a coffee during "morning" hours and it will be served with toast, a boiled egg, and salad. The nostalgic Napolitan spaghetti is recommended at lunchtime.



Map

Chura Cafe

A 599-1 Imadomari, Nakijin Village
 ☎ 080-3943-2458
 H 8:00-16:00
 (Morning: 8:00-10:30; Lunch: 11:00-14:00)
 C Wed, Thu @churacafe.nakijin

Breakfast that satisfied both spirit and stomach

That feeling of relief biting into soft, springy bread

A shop that sells natural-yeast bread and other gentle snacks made with carefully selected ingredients. The breakfast set, consisting of a thick slice of soymilk bread made with rich soymilk from local tofu store, Tanahara, a mini chicken salad containing house-made chicken ham, and additive-free soup is a popular choice.



Map

Bakery café Noix Noix

A 296 Nakasone, Nakijin Village
 ☎ 090-1942-9996
 H 8:30-12:00
 (Bread is sold only on Saturdays from 12:00 to 19:00)
 C Thu, Fri, Sun @noix_noix0903



1. There is also a kids table inside.
2. The bakery's healthy soymilk bread is popular.
3. Thick toast and drink set is priced at ¥550. The extensive menu also features a house-made fermented sausage hot dog.



Generous servings of Nakijin's own vegetables



1. Japanese breakfast with a main dish of grilled mackerel or salmon (¥1,000)
2. Western breakfast with a main dish of hamburger steak
3. The café moved to its current location in February 2024. The interior of the café, which is a renovated *kominka*, offers a relaxed atmosphere.



Happiness is a highly nutritious breakfast

This café, which started making breakfasts at the request of a nearby pension-style guest house, serves two types of breakfast: Japanese style and Western style. Adhering to a philosophy of local production for local consumption, it strives to serve dishes that customers will like, with a focus on seasonal vegetables.



Map

Kissa Kunembo

A 89 Serikyaku, Nakijin Village
 ☎ 0980-56-5191
 H 7:00-14:00
 C Mon, Tue, Wed, Thu

more charms!

02

An abundance of early-morning and night-time programs to enjoy

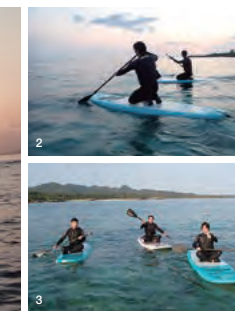


The calm seas of early morning and the beautiful starry skies of night. Spend moments that spark joy through a variety of activities.

Take your fill of the delightful early-morning sea



1. SUP bathed in the morning Sun Take a stroll on the surface of the sea, paddling to your heart's content.
2. Feel the pleasant breeze that strokes your cheeks.
3. As the sun rises higher, you will be able to see into the clear waters of the sea. Check out the coral and the tropical fish.



Try your hand at early-morning SUP

Experience SUP on the gently undulating water, embraced by the soft light of morning. The staff will teach you carefully how to paddle, so even beginners can enjoy it with peace of mind. For an extra fee, you can have your experience filmed by drone.



Map

Nice Time Okinawa

A 705-1 Shoshi, Nakijin Village
 ☎ 080-3959-3603
 T 9:00- (Experiences also available before opening)
 C Occasionally @nicetimeokinawa

Beach Yoga on the morning seashore

Enjoy yoga as you gaze out over the emerald-green beach of Kouri Island. Make a pleasant start to the day by rising early and slowly loosening your body for an hour, embraced by the fresh air of the morning.



Map

Kouri Island Station Sorahashi

A 323-1 Kouri, Nakijin Village
 D 1st and 3rd Sundays of every month
 T 6:30-7:30 (Apr. - Oct.)
 7:00-8:00 (Nov. - Mar.)
 C @kouri_kanau



1. Your instructor will teach you the poses with care, so even beginners can do it with peace of mind.
2. Savasana (resting pose) while floating lightly on the sea
3. Wake up early for a yoga session, and you will be overflowing with energy.

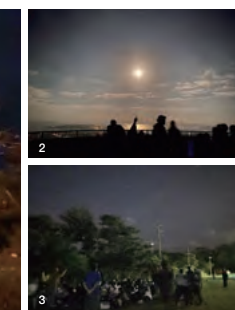


Early morning yoga for healthy mind and body

Your heart will dance at the sight of the stars stretching across the sky.



1. Stargazing tour that is fun for adults and children alike. The staff will explain the stars and constellations that are visible that night.
2. They might even tell you about the moon.
3. Gaze up at the stars from a pleasant spot, surrounded by greenery.



Be entranced by the night sky on a stargazing tour

A stargazing tour conducted by staff members who are qualified star guides is a special bonus exclusively for overnight guests. They will explain the features of the constellations, the distance to the stars, and other facts in a way that is easy to understand. Listen to exciting stories about the stars as you gaze up at the night sky.



Map

Oppadake Forest Park, Nakijin Village

A 1332 Jana, Nakijin Village
 *This experience is exclusive to staying guests. Inquire about participation at reception.
<https://www.fro-nakijin.jp/oppadake/>



03

A collection of popular Okinawa soba noodle shops



From classic soba noodles to more inventive dishes!
Savor the delicious taste of a bowl created with discerning care by the master.

A new sensation!
Fried Okinawa
soba noodles



A collaboration with the traditional cuisine
of the master's hometown

Okinawa soba that locals also love

1 E-DUME Soba ¥900

The restaurant name "E-DUME" is the locals' name for Imadomari. The richly flavored pork bone- and bonito-based broth coats the springy-textured Nago soba noodles, which are popular in the north. The noodles pair wonderfully with tender, slow-cooked, Okinawan-style pork spare ribs with soft cartilage and pork belly.



Soba made by a couple that
run a *minshuku* guest house

3 Manten Soba (Large) ¥800

A hearty serving of Okinawa soba noodles topped with generous servings of pork cartilage, pork belly, and *soki* (Okinawan-style stewed spare ribs) that have been slow-cooked until meltingly tender. Firm, flat noodles glide smoothly down the throat, pairing wonderfully with the light bonito-flavored broth.



A wholly
satisfying
bowl



A light, yet rich broth

5 Mixed Soba ¥850

Firm-textured, house-made noodles that have been fermented for 48 hours, pair deliciously with an umami-packed broth made with a Agü pork and bonito base. Enjoy the harmony of meltingly tender soft cartilage *soki* and fragrantly seared pork belly.

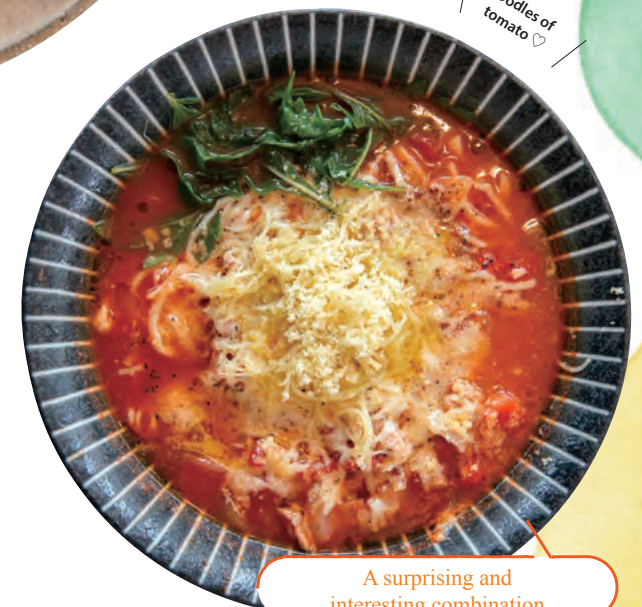
The large cuts of meat are delicious

4 Yonamine-ya Soba (Large) ¥700

The trademark dish, Yonamine-ya Soba, is a bowl of traditional Okinawa soba noodles, featuring a thick slice of pork belly, a chunk of *soki* (Okinawan-style stewed spare rib), kamaboko, and other classic toppings. The broth, made with bonito and pork bone stock, has a light flavor that is delicious enough to drink to the last drop.



Oodles of
tomato



A surprising and
interesting combination

6 Bright Red Tomato Soba ¥1,000

An unconventional Okinawa soba dish containing broth made with an abundance of Nakijin-grown tomato that coats the springy noodles well. The mozzarella cheese topping goes perfectly with this dish. When you've finished eating the noodles, we recommend ordering some rice and turning it into a risotto.



1 Nakijin Dining E-DUME

A 255 Imadomari, Nakijin Village
☎ 070-3803-5885
H 11:00-14:30 (Lunchtime)
15:00-18:30 (Takeout)
C Wed @ @e_dume_nakijin_dining



2 Akagawara Soba Maruya

A 1271 Heshiki, Nakijin Village
☎ 0980-43-7083
H 11:00-16:00 (last orders: 15:30)
C Tue, Wed, Thu @ @maruya_0201



3 Manten

A 315 Nakasone, Nakijin Village
☎ 0980-56-2618
H 11:30-14:00 (or until sold out)
C Sun, Mon @ @manten_nakijin



4 Yonamine-ya

A 513 Yonamine, Nakijin Village
☎ 090-3796-6531
H 11:00-15:00
C Thu



5 Nakijin Soba

A 181 Shoshi, Nakijin Village
☎ 0980-56-5782
H 11:30-15:00 (or until sold out)
C Tue, Wed @ @nakijin_soba



6 Okinawa Shokudo Sorahashi (inside Kouri Island Station Sorahashi)

A 323-1 Kouri, Nakijin Village
☎ 0980-56-2128
H 10:00-20:00
C Open every day @ @kouri_kanau



Recommended 1-day Plans to Explore Nakijin Village

Experiences for enjoying the abundance of nature, delicious food, and comfortable hotels of the area. Here are some plans that offer the enjoyment of a rich variety of Nakijin's charms.



12:00 Haamine's

Sri Lankan restaurant. Enjoy the exquisite taste of authentic curries made with coconut milk and locally grown spices.

A 1031 Wakugawa, Nakijin Village
T 080-6022-0083
H 11:00-15:30 (last orders, or until sold out)
C Mon, Tue **@**haamines.okinawa



Map



The food is cooked by Amila, who hails from Sri Lanka.



15:00

Kouri Island Marine Club, Zan Marine

Guided diving experience in the sea off Kouri Island. There is a very high chance that you will meet an ocellaris clownfish.



Map

A 30-1 Kouri, Nakijin Village
T 0980-56-5136
H 9:00-16:00
C Open every day
@zan_marine

In winter, the e-bicycle tour is recommended!



A bicycle tour of the deep charms of Nakijin Village, including the stands of fukugi trees and hidden-gem beaches. You will be escorted by a guide from the tourism association.

Scan here for details!



Plan 1 Girls' Trip

A plan packed with popular cafés and restaurants, the sigh-inducing beauty of the sea, and other spots that you will have you snapping photo after photo.



13:30 Kouri Island

Also known as "Love Island," this island is about 8 km in circumference. Heart Rock is a recommended location for photos.



Map

A Kouri, Nakijin Village



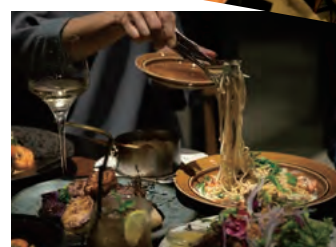
18:00 Restaurant L LOTA

Creative Italian made with Okinawan produce, such as smoked Yanbaru chicken and sauté of fresh fish caught that day from coastal waters.



Map

A 466-1 Kouri, Nakijin Village
T 0980-51-5031
H Lunch: 12:00-14:40 (last orders)
 Café: 15:00-16:00 (last orders)
 Dinner: 18:30-20:30 (last orders)
C Thu **@**onesuite_llota_kouri



20:00 One Suite THE TERRACE

A villa-style hotel overlooking the Kouri blue sea. At night, sparkling stars fill the sky.



Map

A 281 Kouri, Nakijin Village
T 0980-51-5020
H Check-in: 15:00-21:00; Check-out: 11:00
@ @onesuite_the_terrace



12:00 Kouri Ocean Tower

Observation deck with panoramic views of Kouri Bridge. There is also a café that serves colorful drinks and a shell museum.



Map

A 538 Kouri, Nakijin Village
T 0980-56-1616
H 10:00-18:00 (last entry: 17:30)
C Open every day
@ @kourioceantower

Even the equipment is provided

Empty-handed BBQ!

A BBQ set that includes Kanagusuku Agū pork is provided. For a separate fee, you can rent a gas-operated barrel grill set, which will be delivered to the beach or to your accommodation.



Map

Kinjo Meat

A 128 Jana, Nakijin Village
T 0980-56-2781
H 9:00-17:00
C Wed, Sun
<https://kinjomeat.co.jp/>



20:00 Nakijin Village General Sports Park Camping Area

Fully equipped with toilets, showers, and vending machines. You can also use the play equipment, pool, gym and other facilities in the park.



Map

A 851-1 Nakasone, Nakijin Village
T 0980-56-5955
H Check-in: 11:00-17:00; Check-out: 10:00
C Occasionally

Plan 2 Family

Check out Kouri Island landmarks, or try your hand at a barbecue or camping. A plan that both adults and children will enjoy.

15:00

Sonmin-no-hama Beach

Beach with crystal clear waters. In summer only, anti-jellyfish nets are set up and swim rings and other beach toys can be rented for a fee. Coin-operated showers can be used all year round.



Map

A 851-1 Nakasone, Nakijin Village
T 0980-56-5955
H Apr - Oct.: 9:00-19:00
 Nov. - Mar.: 9:00-18:00

Here are some other camping areas!



Kouri Island Camp Garden

Tents, BBQ grills, and other equipment are available to rent, so you don't need to bring anything for an enjoyable stay.



Map

A 2432 Kouri, Nakijin Village
T 0980-56-3729
H Check-in: 13:00-17:00
 Check-out: 8:00-11:00
C Occasionally
<https://kourijima-camp.jp/>



Oppadake Forest Park, Nakijin Village

As well as a camping area, the park is fully equipped with facilities such as log cabins, shower facilities, and a cooking area.



Map

A 1332 Jana, Nakijin Village
T 0980-56-1250
H Check-in: 15:00-17:30
 Check-out: 10:00
C Occasionally
<https://www.fro-nakijin.jp/oppadake/>

Not to be missed!

Find Nakijin Village's Best Souvenirs!

Food products made with local produce, specialty sake, original merchandise...the list goes on.

Here are the souvenirs that you will definitely want to buy when you come to Nakijin Village.



A
Nakijin Honey
Smallflower beggarticks

Natural honey with a distinctively rich sweetness, produced from the nectar of the smallflower beggarticks. Delicious eaten as is, and also recommended as a hidden flavor in cooking.



A
Sata Andagi

Small sata andagi (Okinawan donuts) hand-made in the store's kitchen. There is a wide variety of flavors, such as brown sugar, purple yam, and dragon fruit.



A B
Watermelon Cap

A unique mesh cap with the design of a watermelon, one of Nakijin's local specialties. You might feel like a tourism ambassador every time you wear it.



B
Kyoisha Nakijin Brown Sugar

Brown sugar that has been made over direct flame in a brick oven. Distinctive for its clean sweetness.



D
Sennen no Hibiki
Long-aged vintage awamori
43% alc., 720 ml

Vintage awamori, made only with Thai rice and black yeast, that has been aged for many years. It has a full-bodied flavor.



C
Fried-ginger brown sugar sauce
and brown sugar butter

Both made with brown sugar from Nakijin Village. Thick, rich, brown sugar butter and fried-ginger sauce that has a deeply rich flavor.



E
Basho Paper Bingata Framed Picture
(postcard size)

Vibrantly colored Bingata designs with typically Okinawan motifs, such as plants and shisa, created on basho (banana) paper, a traditional Okinawan paper with a natural texture made with the fibers of itobasho bark.



D
Uruwashiki Furusato
30% alc., 720 ml

Made with water from the Nakijin Village's Oppayama foothills. Blended with 20% old sake, this awamori is highly fragrant with a subtle sweetness.



E
Basho Paper Bingata Bookmark

The cute pictures, such as parent and child playing together and peony blooms, match the natural colors of the basho paper. A large variety of designs is available, so be sure to check them out.



A B
Nemurigusa Honpo
Orange day-lily namacha tea (large)

Caffeine-free namacha tea made only with the leaves and stems of hand-picked orange day-lily. To preserve its components, the tea is not roasted, so you can taste its inherent subtle sweetness.



B
Kouri Island Blue Curry

A refreshing blue curry made in the image of Kouri Island's blue sea. Creamy, yet hot and spicy.



B
Sata-ya's
Brown Sugar Syrup and Purple Yam Chips

Made with purple yams grown on Kouri Island and pure brown sugar syrup. The chips are cut in large pieces and have a wonderfully firm texture.



F
Hokuzan Store
T-shirt

T-shirt featuring an over-sized print of Hokuzan Store, the supermarket frequented by locals. Retro and cute.



G
Hibiscus Gift Box
(Hibiscus shampoo and treatment)

Made with the extract of hibiscus leaves grown without chemical pesticides or fertilizers. Moisturizes the scalp to give you shiny locks.



H
Nakijin Herb Shell Ginger Gel

All-in-one lotion with the pleasantly refreshing fragrance of shell ginger. For day-to-day skincare.



A **Nakijin Station Sore**

A 157 Tamashiro, Nakijin Village
T 0980-56-4940
H 9:00-17:00
C Mon



Map



C **AMESOKO Store**
(inside DRIVE IN Rikarika Warumi)

A 1124-5 Amesoko, Nakijin Village
T 0980-56-1223
H 10:00-17:00 **C** Open every day
@ @rikarikawarumi2022



Map



E **Dyeing Workshop Banananesia**

A 697-3 Jana, Nakijin Village
T 0980-56-3020
H 9:00-17:00
C Occasionally
<http://banananesia.official.jp/>



Map



G **YUMEJIN Ltd.**

A 18-2 Kaneshi, Nakijin Village
T 080-5858-2659
H 9:00-17:00 (weekdays)
10:00-17:00 (Sat)
C Sun, Year-end/New Year holidays
<https://www.yumejin.jp/>



Map



B **Sorahashi MARKET**
(inside Kouri Island Station Sorahashi)

A 323-1 Kouri, Nakijin Village
T 0980-56-2128
H 9:00-19:00
C Occasionally **@** @kouri_kanau



Map



D **Nakijin Shuzo Brewery Co.**

A 500 Nakasone, Nakijin Village
T 0980-56-2611
H 9:00-17:00
C Weekends and public holidays
<https://nakijinshuzo.jp/>



Map



F **Hokuzan Store**

A 170 Imadomari, Nakijin Village
T 0980-56-5420
H 6:00-22:00 (weekdays and Sat),
7:00-21:00 (Sun)
C Open every day
<https://www.hokuzan-shop.com/>



Map



H **Nakijin Herb Garden**

A 5101 Imadomari, Nakijin Village
T 0980-56-4622
H 9:00-17:00
C Occasionally
<https://nakijingusukushop.com/wp/>



Map

Nakijin Village Event Calendar

Introducing
the area's
annual events!

Early January New Year Road Race Tournament

■ Nakijin Village Sports Association
(inside Village Gymnasium)
☎ 0980-56-5955

Timed marathon event in which participants run through the peaceful hamlets of Nakijin Village. Runners are treated to a warm bowl of yushi dofu (Okinawan tofu soup) after the race.

January New Year Northern Okinawa Bullfighting Tournament



The fighting bulls of Okinawa gather for a tournament at the Nakijin Village-operated bullfighting arena! The dynamic battles as the bulls crash into each other are an awesome sight.

Late January to early February Cherry blossom viewing around Nakijin Castle Ruins

Lines of Taiwan cherry trees, the earliest to blossom in Japan, adorn the sides of the road that climbs from the National Highway to the Nakijin Castle Ruins. Enjoy the collaboration between cobblestone paths and cherry blossoms.

Early July Nakijin Grape Picking

Hands-on experience of harvesting Kyoho and Fujiminori grapes at Nakijin's three vineyards. A bonus is being able to taste the fresh-picked grapes.



Mid-July to late August Swimming at Sonmin-no-hama Beach

■ Nakijin Village General Sports Park
☎ 0980-56-5955

Sonmin-no-hama Beach, which is loved by locals, is open for swimming from around mid-July to late August. Enjoy swimming and snorkeling in the crystal clear waters of the sea.



September (August in old calendar) Harvest festivals

Each section of the village holds its own festival to pray for a bountiful harvest and the prosperity of the village's residents. Rojigaku, a traditional form of court music from the Wakugawa precinct, and the Jana precinct's Ayachijishi lion puppets, are must-see events that have both been designated as intangible cultural heritage of Okinawa.

Scan here
for details!



August to early September Nakijin Festival

■ Nakijin Festival Executive Committee
(inside Nakijin Village Office)
☎ 0980-56-2101

As well as live music by Okinawan artists and performances of Okinawan dance and traditional performing arts, the thrilling bullfighting tournament is a must-see event. You can enjoy the festival all day, from morning until night, with "early morning health walks" around the venue and, at the end of the festival, a fireworks display that will adorn the night sky.



September to November Nakijin Hari

■ Nakijin Fisheries
Cooperative Association
☎ 0980-56-2226

A regatta featuring races of large Okinawan dragon boats and small traditional *sabani* fishing boats. The sight of the entire crew of the boats rowing in unison to propel their boats forward makes for an exciting event.



Late January to early February Nakijin Gusuku Cherry Blossom Festival

■ Nakijin Gusuku Cherry Blossom
Festival Executive Committee
(inside Nakijin Tourism Association)
☎ 0980-56-1057

Performances of the region's traditional performing arts will be on show on the specially erected stage, and specialty products of Nakijin Village can be purchased at the farmer's market. The hours after the sun goes down, when the blossoms are lit up, are particularly recommended. The blossoming cherry trees along the paths inside the castle and the castle walls are illuminated in vibrant colors with Ryukyu glass and other lighting, creating an otherworldly atmosphere.



March Open Garden

■ Nakijin Village Chamber of
Commerce and Industry Women's Division
☎ 0980-56-4474

An event in which residents open up their private gardens to visitors, so they can admire the brightly colored flowers and plants that the owners have poured their hearts into growing.



Supporting
Village
Development!

Nakijin Village's Hometown Tax Program

Check out the attractive benefit gifts that Nakijin Village offers, from mangoes and watermelons to accommodation vouchers.

Hometown Tax Program Mangoes



Akeno Fruits Co., Ltd.
Yasukichi Miyagi, Chairman



Popular for their rich sweetness, the result of great care taken with growing methods

I started growing mangoes 36 years ago with the intention of turning Nakijin into Japan's top village for fruit production. Nakijin is blessed with an excellent environment for growing mangoes, with good soil and water quality. We have also incorporated a variety of ingenious methods to further increase the sugar content, such as introducing organic fertilizer made with seaweed and insisting on low-chemical pesticides. Our goal is to make the name Nakijin synonymous with mangoes here in Okinawa and throughout the whole of Japan. Going forward, I want to cooperate with other producers to increase production and place efforts into the development of mango processed products.

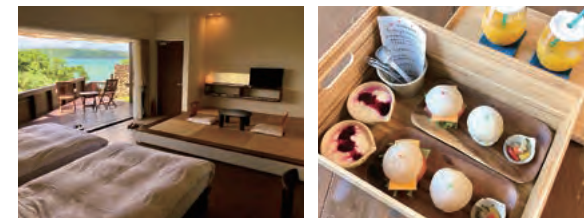


Scan here for benefit gifts

Hometown Tax Program Accommodation



Okinawa small hotel tinto*tinto
Yusuke and Ayako Emoto, owners



Accommodation with beautiful views that even families with small children can enjoy with peace of mind

We have lived in Nakijin Village for 14 years. Wanting to raise our children in a place that is rich in nature, we started our small hotel, "tinto*tinto." The name means "heaven and sky" in the local dialect. We are located on a hill, so we have wonderful views of the emerald-green sea and Kouri Island. Our Japanese-Western room features a raised space laid with Ryukyu tatami mats, so families with children can also stay here with peace of mind. For our breakfasts, we insist on using local produce. We also sell Okinawan handicrafts such as Yachimun pottery and Ryukyu glass, so please feel free to pick them up and admire them.



Scan here for benefit gifts



Map

385-1 Tokijin, Nakijin Village
0980-56-5998
<https://tintotinto.com/>

Proud to have Japan's largest shipment volume Also recommended for gifts



Scan here for benefit gifts

I used to work at the Tourism Association because I wanted to promote the village where I was born. Then, five years ago, I started my own farm because I decided that I wanted to stand on the side of the growers and help to raise the profile of Nakijin's specialty produce. At the moment, I am mainly growing watermelons. Nakijin Village has a warm climate, which means that we can grow watermelons all year round. I particularly recommend the watermelons harvested in early spring, when the considerable difference in temperature in the morning and evenings produces a high sugar content in the fruit. Here in Nakijin Village, the local farmers cooperate with each other so that we can grow even more delicious watermelons, so I do hope you will taste them.



Nakijin Watermelon Ltd.
Yusuke Yamashiro, Farmer



What is the Hometown Tax Program?

The Hometown Tax Program is a program in which taxpayers can choose their own hometown or a municipality that they want to support and donate their taxes to that municipality. Taxpayers can request to the municipal government where their donations should be allocated to address local issues, such as community development and environmental protection, so taxpayers can feel that their donations are being put to good use. If donations are made within the deduction limits, taxpayers will receive a benefit gift of local products or accommodation vouchers from the region that they want to support, for a small payment of ¥2,000.

*Please note that deduction limits differ depending on annual income and family composition.

Scan here to apply at the Hometown Tax Program website



We will use your Hometown Tax Program donations carefully to develop a village that is rich in vitality!

- (1) Child development and parenting support
- (2) Environmental protection and promotion of tourism and local industry
- (3) Conservation of World Heritage site, education, culture, and sport
- (4) Healthy welfare, village development centered on village residents
- (5) Other projects that the village mayor considers to be necessary



